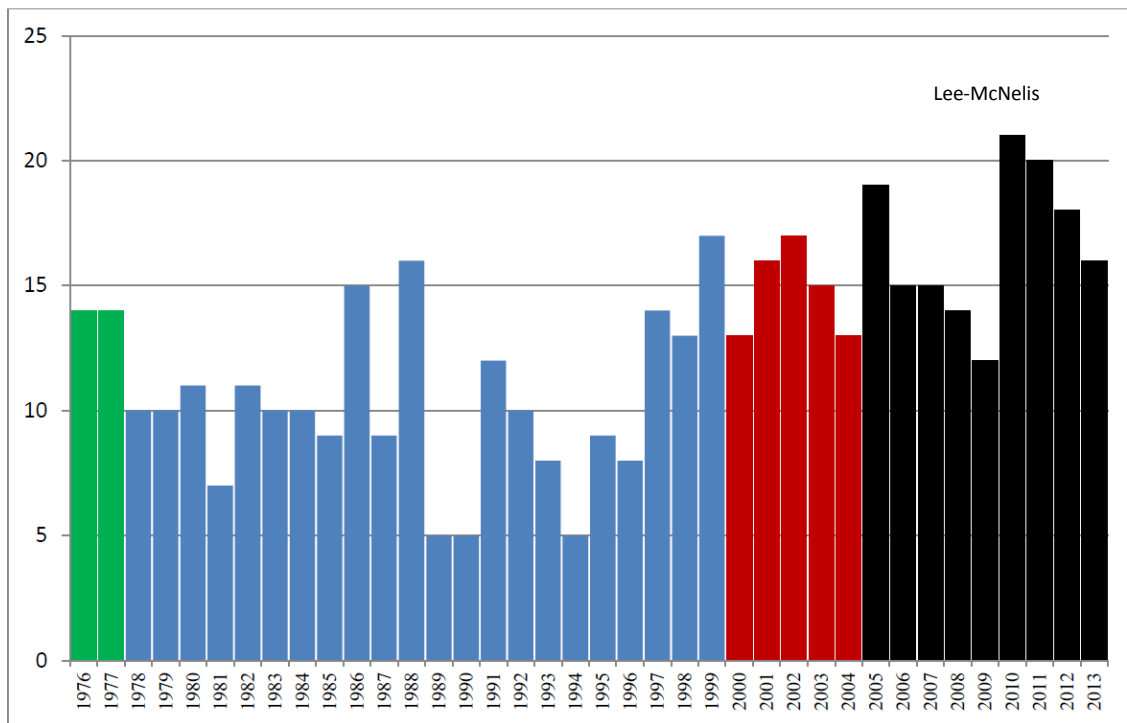


Revisiting
The Joye Lee Experiment
A Guest Column by Susan Green-Lewis

What will USM athletics director Bill McGillis say when he sits down to evaluate the job women's basketball coach Joye Lee-McNelis did in her ninth season (in 2012-13) at the helm? Does he, like his predecessor, Jeff Hamond view Lee-McNelis as a hard worker who deserves the job? The graph below contradicts that, however, as the bars indicate yearly team losses by the only four coaching regimes in USM women's basketball history. The bars signifying Lee-McNelis' regime, all shown in black, point out that the four seasons with the most losses in USM women's basketball history all belong to Lee-McNelis, with *three of these four* coming in her sixth, seventh and eighth seasons. Put another way, about half of Lee-McNelis' nine-year career at USM has been spent rewriting the bottom of the USM women's basketball record book.



What will new USM athletics director Bill McGillis conclude about Lee-McNelis? The answer to that question remains to be seen. The evidence that McGillis needs to draw a reasonable conclusion is all around him. Perhaps he can't see over the \$1.5 million deficit that his unit is dealing with, and that is causing the institution to bleed. Surely addressing the sinking ship that is the Lee-McNelis regime would help.